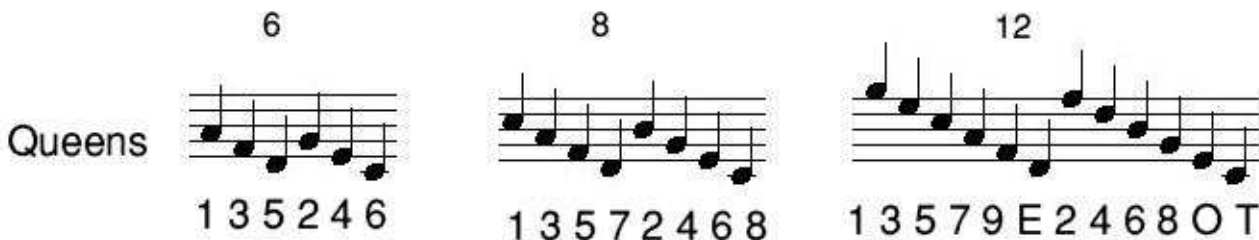


Change ringing methods

Ringing normally starts with ‘Rounds’, ringing in order down the scale. (Bells are numbered from 1 downwards regardless of the musical note.)



They may ring in other tuneful orders such as Queens (odds then evens) supposedly named after Elizabeth I who thought it most tuneful.

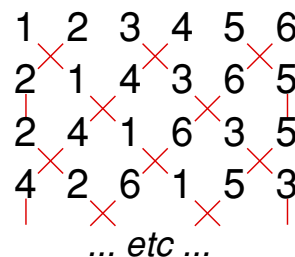


Ringing methods is much more dynamic – the order continually changes.

Adjacent bells swap places in a pre-determined pattern.

Each ‘change’ creates a new sequence with the bells ringing in a different order.

Continuing the process (in this case alternating between swapping all pairs and swapping all but first and last) generates many different sequences before returning to Rounds.



Ringers remember methods by thinking of their bell’s ‘path’ though the sequences as a pattern – ie joining up all the red lines for an individual bell in the diagram above.

The diagram on the right is how a ringer visualises the path of ‘Plain Bob Major’, a basic eight bell method.

The regularity makes the pattern easier to remember.

All bells (except bell 1) follow the same path but start at a different point on it (shown by numbers).

Most methods are much more complex but they are still rung entirely from memory.

